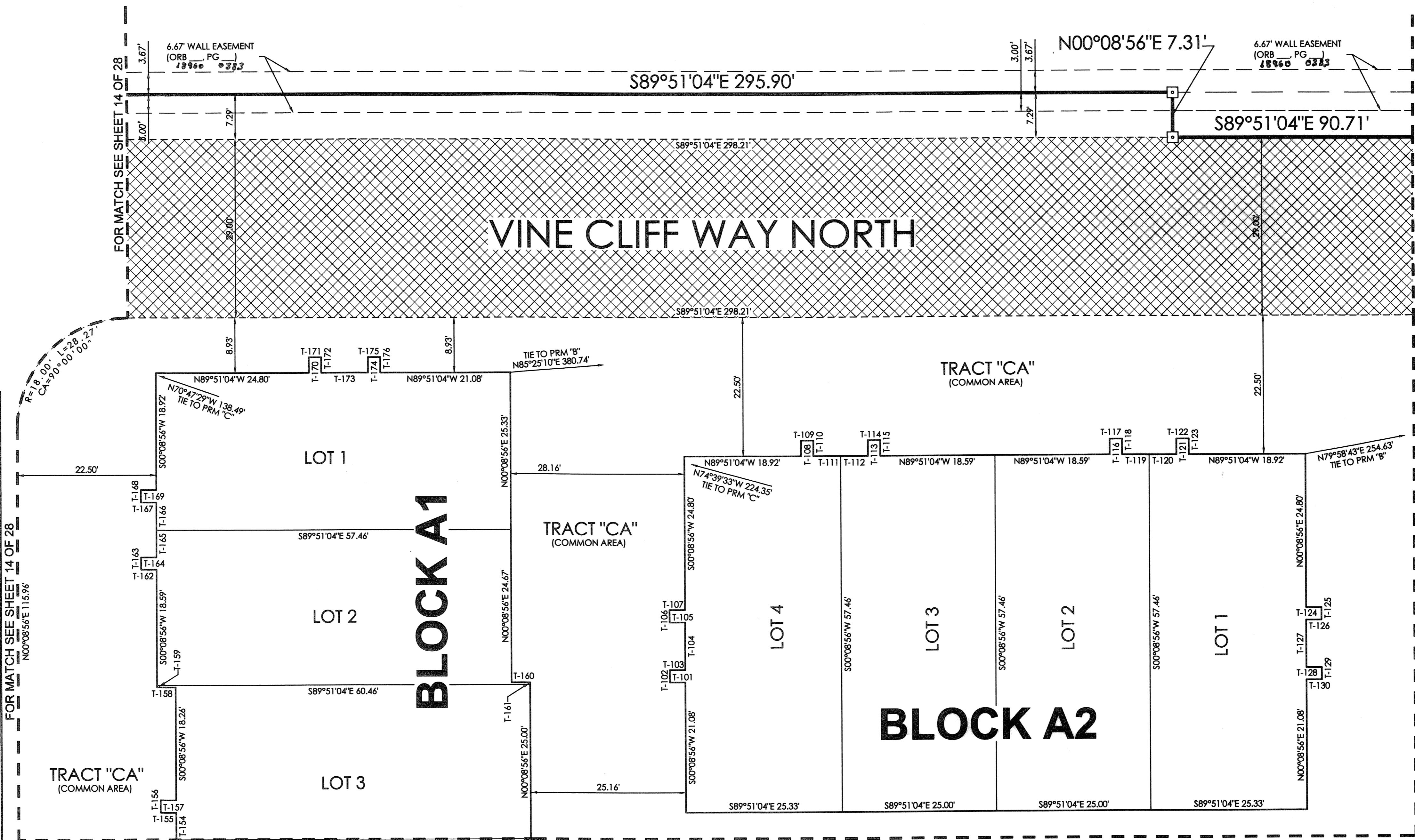


CIELO TOWNHOMES AT THE SHOPS OF DONALD ROSS

BEING A REPLAT OF TRACT "R", THE SHOPS OF DONALD ROSS REPLAT OF TRACT "A", RECORDED IN PLAT BOOK 103, PAGE 142, PUBLIC RECORDS, PALM BEACH COUNTY, FLORIDA AND LYING IN THE NORTHWEST ONE-QUARTER OF SECTION 25, TOWNSHIP 41 SOUTH, RANGE 42 EAST, CITY OF PALM BEACH GARDENS, PALM BEACH COUNTY, FLORIDA.

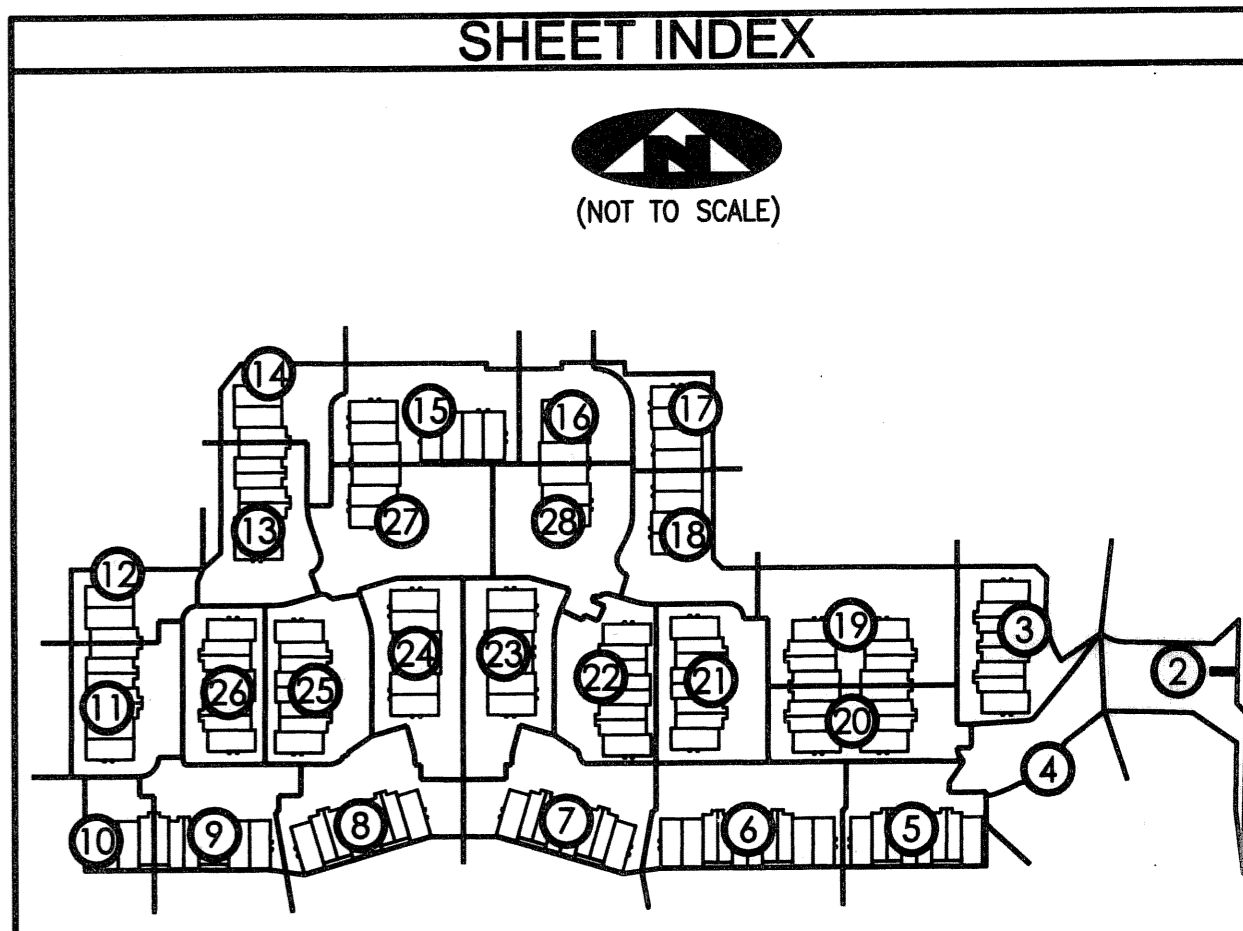
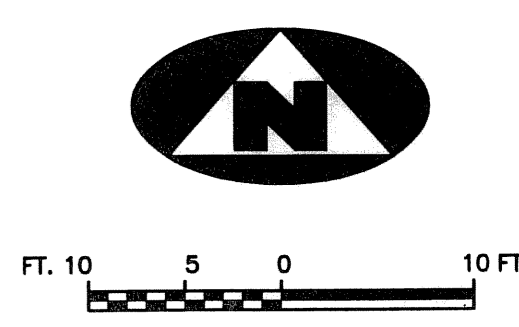
171

TRACT "C"
(PLAT BOOK 103, PAGE 142)



TANGENT TABLE

T-101	S89°51'04"E 2.50'
T-102	S00°08'56"W 2.00'
T-103	N89°51'04"W 2.50'
T-104	S00°08'56"W 7.58'
T-105	S89°51'04"E 2.50'
T-106	S00°08'56"W 2.00'
T-107	N89°51'04"W 2.50'
T-108	S00°08'56"W 2.50'
T-109	N89°51'04"W 2.00'
T-110	N00°08'56"E 2.50'
T-111	N89°51'04"W 4.41'
T-112	N89°51'04"W 4.41'
T-113	S00°08'56"W 2.50'
T-114	N89°51'04"W 2.00'
T-115	N00°08'56"E 2.50'
T-116	S00°08'56"W 2.50'
T-117	N89°51'04"W 2.00'
T-118	N00°08'56"E 2.50'
T-119	N89°51'04"W 4.41'
T-120	N89°51'04"W 4.41'
T-121	S00°08'56"W 2.50'
T-122	N89°51'04"W 2.00'
T-123	N00°08'56"E 2.50'
T-124	N89°51'04"W 2.50'
T-125	N00°08'56"E 2.00'
T-126	S89°51'04"E 2.50'
T-127	N00°08'56"E 7.58'
T-128	N89°51'04"W 2.50'
T-129	N00°08'56"E 2.00'
T-130	S89°51'04"E 2.50'
T-131	S00°08'56"W 4.41'
T-132	S89°51'04"E 2.50'
T-133	S00°08'56"W 2.00'
T-134	N89°51'04"W 2.50'
T-135	S00°08'56"W 4.41'
T-136	S00°08'56"W 2.00'
T-137	N89°51'04"W 2.50'
T-138	S00°08'56"W 4.41'
T-139	S00°08'56"W 2.00'
T-140	N89°51'04"W 2.50'
T-141	S00°08'56"W 4.41'
T-142	S00°08'56"W 2.00'
T-143	N89°51'04"W 2.50'
T-144	S00°08'56"W 4.41'
T-145	S00°08'56"W 2.00'
T-146	N89°51'04"W 2.50'
T-147	S00°08'56"W 4.41'
T-148	S00°08'56"W 2.00'
T-149	N89°51'04"W 2.50'
T-150	S00°08'56"W 4.41'
T-151	S00°08'56"W 2.00'
T-152	N89°51'04"W 2.50'
T-153	S00°08'56"W 4.41'
T-154	S00°08'56"W 2.00'
T-155	N89°51'04"W 2.50'
T-156	S00°08'56"W 4.41'
T-157	S00°08'56"W 2.00'
T-158	N89°51'04"W 2.50'
T-159	S00°08'56"W 4.41'
T-160	S00°08'56"W 2.00'
T-161	N89°51'04"W 2.50'
T-162	S00°08'56"W 4.41'
T-163	S00°08'56"W 2.00'
T-164	N89°51'04"W 2.50'
T-165	S00°08'56"W 4.41'
T-166	S00°08'56"W 2.00'
T-167	N89°51'04"W 2.50'
T-168	S00°08'56"W 4.41'
T-169	S00°08'56"W 2.00'
T-170	N89°51'04"W 2.50'
T-171	S00°08'56"W 4.41'
T-172	S00°08'56"W 2.00'
T-173	N89°51'04"W 2.50'
T-174	S00°08'56"W 4.41'
T-175	S00°08'56"W 2.00'
T-176	N89°51'04"W 2.50'



1 = DENOTES SHEET NUMBER OF 28

LEGEND

(R)	DENOTES A RADIAL LINE	R	DENOTES RADIUS DISTANCE	⊙	DENOTES A SET PERMANENT CONTROL POINT	□	DENOTES A SET PERMANENT REFERENCE MONUMENT (LB 7344)
C/L	DENOTES A CENTERLINE	L	DENOTES ARC LENGTH DISTANCE	⊙	DENOTES A FOUND PERMANENT REFERENCE MONUMENT (LB 2171)	⊙	DENOTES AN INGRESS, EGRESS, DRAINAGE AND UTILITY EASEMENT (PB 103, PAGE 142)
DE	DENOTES DRAINAGE EASEMENT	CA	DENOTES CENTRAL ANGLE	■	DENOTES A SEACOAST UTILITY EASEMENT (ORB 17773, PAGE 469)		
SUA	DENOTES SEACOAST UTILITY AUTHORITY	LCB	DENOTES LONG CHORD BEARING				
LS	DENOTES LIFT STATION EASEMENT	CHD	DENOTES CHORD DISTANCE				
EAE	DENOTES EMERGENCY ACCESS EASEMENT	ORB	DENOTES OFFICIAL RECORDS BOOK				
		PB	DENOTES PLAT BOOK				

SURVEYOR'S NOTES

1. THE BASE BEARING, AS SHOWN HEREON, IS S01°22'09"W ALONG THE EAST LINE OF TRACT "R", THE SHOPS OF DONALD ROSS REPLAT OF TRACT "A", RECORDED IN PLAT BOOK 103, PAGE 142.
2. IN THOSE INSTANCES WHERE UTILITY OR DRAINAGE STRUCTURES ARE CONSTRUCTED IN CONFLICT WITH THE PLATTED PERMANENT CONTROL POINT POSITION STRADDLERS MONUMENTED AS PLATTED POSITION.
3. LINES THAT INTERSECT CURVES ARE NOT RADIAL UNLESS OTHERWISE NOTED.
4. THIS INSTRUMENT WAS PREPARED BY W.M. R. VAN CAMPEN, P.S.M. NO. 2424, IN AND FOR THE OFFICES OF ASSOCIATED LAND SURVEYORS, INC., 4152 WEST BLUE HERON BOULEVARD, SUITE 121, RIVIERA BEACH, FLORIDA, 33404

FILE: CIELOPLOT	
FB:	WO.NO.: P238
SCALE: 1"=10'	DATE: 12/25/2004
DWN: KVC	SHEET 15 OF 28

ASSOCIATED LAND SURVEYORS, INC.
 4152 W. BLUE HERON BOULEVARD—SUITE 121
 RIVIERA BEACH FLORIDA 33404 LB NO. 7344
 PHONE: (561) 848-2102 FAX: (561) 844-9659 EMAIL: ALSSURVEY@AOL.COM